

Contact Us

Aireborough Children's Services
c/o Yeadon Westfield Infants School
Westfield Grove
Yeadon
Leeds
LS19 7NQ

Telephone: 0113 250 6593

Email:
peter.collins@aireboroughxs.co.uk

Website:
Visit www.aireboroughxs.co.uk
for more information about all our activities



Find us on Facebook and on Twitter.



Working together with children,
young people and families



Aireborough Children's Services



Welcome to Aireborough Children's Services. We work in close partnership with the children's centre and all the schools across Guiseley, Rawdon and Yeadon. Our aim is to provide early help for every child, young person and family in the area to access the activities, guidance, information and support that can enable them to achieve their full potential.

Our team of experienced, qualified professionals is available to offer help and support early in the life of problems, confidentially and effectively whenever young people or families need it. We work with infants, juniors and high schools and other support services. Primarily, we work closely with school Learning Mentors to give real support when children need it most.

If you would like to know more about the support we can offer, please speak to your school Learning Mentor or contact us using the contact details in this leaflet.

Therapeutic Counselling Services

- Individual short-term counselling for children, young people or parents
- Therapeutic support for parents and professionals working with children
- Group-based work tackling issues such as self-confidence, anxiety and stress-management

Family Support

- Individual home-based support, strategies, guidance and advice
- Group-based courses and parenting programmes:
 - * STEP FORWARD
 - * Family Caring Trust
 - * Webster Stratton “Incredible Years”

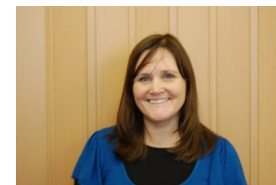
Meet The Team



Simon Toyne
Integrated Services Leader



Marion Astin
School and Parent Therapist



Karen Coburn
Family Support Worker



Rachael Wright
School Therapist



Alison Forster
Family Support Worker



Helen Bell
Adult Counsellor



Sue Scholey
Family Support Worker



Peter Collins
Administrator



Practical Support and Signposting

- Links with charities and services offering a whole range of support and services from housing and goods to debt management

Funding and Accessing Activities and Events

- Signposting to appropriate funding support to enable access to activities and events, and to overcome barriers to participation.
- Assessment to access specialist services such as mental health and drugs support