

# TRANMERE TIMES NEWSLETTER

## Friday 23rd March 2018

### General School Information/Dates

Please visit the [Headteacher's Blog](#) on the school website for more information on what's been happening in school recently

#### Sport Relief – Friday 23<sup>rd</sup> March 2018

Thank you to everyone who supported Sport Relief today helping raise **£378.00** for this very worthy cause.



child.

Entries for both competitions should be brought into the hall **on the morning** of each competition.

The cakes from the competition will be sliced after judging has taken place and sold in the playground at morning break on Wednesday and Thursday mornings at a cost of 20p per slice. Please ensure your child has the correct change.

Please note these competitions are entirely voluntary.

#### Easter Competitions (Next Week)

Monday 26th March is the annual Easter Egg Competition which is held in the hall. This is open to children in all year groups. The children need to decorate a HARD boiled egg. Entry fee is 30p – one entry only per child. The eggs must be the children's own work. Prizes are allocated to each class.

#### Key Stage 2

On Tuesday 27th March the Easter Cake Competition will take place for all children in Key Stage Two. Again the cakes must be the children's own work. Entry fee is 30p – one entry only per



#### Holiday Club

Following the success of the previous two years Holiday Clubs during the Summer holidays we are once again running the club during the first 3 weeks of this year's Summer holiday. A detailed letter and application form is available on the school website. [www.tranmerepark.leeds.sch.uk](http://www.tranmerepark.leeds.sch.uk)

#### Book Fair

Thank you to all families who supported the book fair this week. School have generated a fantastic **£746.45** in sales and the commission generated will be used to buy books across school. Thank you for your continued support.

#### Permission For Children To Walk Home From School

As previously notified school have been reviewing the current practice around parental permission for older KS2 pupils to walk home from school unaccompanied by an adult. From **Monday 16th April** we will now require that any child from year 4 upwards, who has parental permission to walk home, will only be allowed to do so if the attached consent slip is completed and returned to school. More information is available in the attached letter with this week's Tranmere Times. An electronic copy of the consent slip is also attached here and a paper copy was given to all pupils from year 4 upwards on Monday 18th March, in order to make this transition as easy as possible for parents. The consent slip will be available on the school website going forward. We hope that you can understand our need to have a clear policy around this issue and thank you for your support.

### **Class/Team Photographs**

Please note the change of date for Class/Team photographs from Friday 20<sup>th</sup> April to **MONDAY 16<sup>th</sup> APRIL**. Please ensure your child is dressed in the correct uniform. PLEASE RETURN ANY SPORT KIT BY WEDNESDAY 28<sup>TH</sup> MARCH AS THIS WILL BE NEEDED FOR SPORTS TEAM PHOTOGRAPHS.

### **Lunchtime Supervisory Assistant Vacancy**

We are looking to recruit an additional Lunchtime Supervisory Assistant to start as soon as possible. The role involves the supervising of children both in the dining hall and on the school playground from 11.55am to 1.10pm. We are happy to recruit people for just one or two lunchtimes a week. If you are interested or know somebody who may be and would like further information please call at the school office and ask to speak to Mrs Sanderson.

### **Science Selfies Competition**

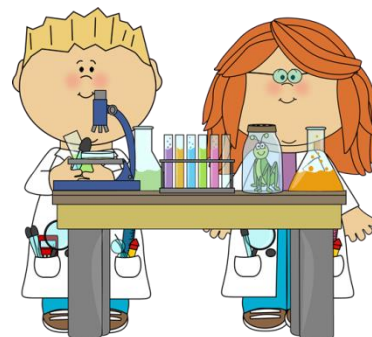
We are launching the Tranmere Science Selfies Competition which will run from Friday 9th February until Sunday 15th April.

For a chance to win science goodies, take a selfie of yourself enjoying science outside of school. Your selfies could include a visit, something you see on holiday or you taking part in a science activity at home. Be as creative as you like!

Don't forget to include a caption to tell us why it's scientific.

To enter, get an adult to tweet your photo and caption to @tranmerepark using #scienceselfies OR email [science@tranmerepark.leeds.sch.uk](mailto:science@tranmerepark.leeds.sch.uk)

Good luck!



### **Parent Forum Meeting – Thursday 26<sup>th</sup> April 9am**

The last scheduled Parent Forum Meeting was cancelled due to the snow. The rearranged date is **Thursday 26<sup>th</sup> April at 9am**. The meeting scheduled to take place on 3<sup>rd</sup> May is now cancelled.

## **Important Information**

### **Residential Payments**

<b>Year 6 PGL</b>	<b>£55.00 due by 5<sup>th</sup> March *now overdue*</b>
<b>Year 3 Malham</b>	<b>£30.00 final payment due by 20<sup>th</sup> April</b>
<b>Year 4 Malham</b>	<b>£25.00 final payment due by 9<sup>th</sup> March *now overdue*</b>

### **Assemblies**

Parents are most welcome to attend their child's class assembly/drop-in session at **9.10am**.

27 <sup>th</sup> April	Performance Assembly	Assembly
4 <sup>th</sup> May	Wrens	Drop-In
11 <sup>th</sup> May	Yr 6 SATs Prep	None
18 <sup>th</sup> May	Yr 6 SATs Week	None
25 <sup>th</sup> May	Woodpeckers	Drop-In

### **School Dinner Money**

Meal prices are £2.40 per meal £12.00 per week. Please be reminded that meals must be purchased for the full week ahead.

### Forthcoming Dates

Monday	26 <sup>th</sup> March	Easter Egg Competition – Whole School
Tuesday	27 <sup>th</sup> March	Easter Cake Competition – KS2
<b>Thursday</b>	<b>29<sup>th</sup> March</b>	<b>SCHOOL CLOSSES for the Easter Holidays at 3.15pm</b>
<b>Monday</b>	<b>16<sup>th</sup> April</b>	<b>SCHOOL RE-OPENS FOR THE SUMMER TERM</b>
Monday	16 <sup>th</sup> April	Class/Team Photographs <i>*please note change of date *</i>
Tuesday	1 <sup>st</sup> May	Year 4 Malham 2 Day Residential
Wednesday	2 <sup>nd</sup> May	PGL Parent's Information Evening 6-6.45pm
<b>Monday</b>	<b>7<sup>th</sup> May</b>	<b>MAY DAY (BANK HOLIDAY) - SCHOOL CLOSED</b>
<b>Tuesday</b>	<b>8<sup>th</sup> May</b>	<b>SCHOOL RE-OPENS</b>
Thursday	4 <sup>th</sup> May	PGL Parent's Information Evening 6-7pm
Wednesday	9 <sup>th</sup> May	Y3 Malham Residential Meeting for Parents 6pm
Monday	14 <sup>th</sup> May	KS2 SATS all week (please do not book holidays during this week)
Monday	21 <sup>st</sup> May	Pupil Mentoring Week Book Aid Week (book stall in school)
Thursday	24 <sup>th</sup> May	Sports Day – EYFS/KS1 9.30-11.30am KS2 1.30-3.00pm
<b>Friday</b>	<b>25<sup>th</sup> May</b>	<b>SCHOOL CLOSSES FOR THE HALF TERM HOLIDAYS AT 3.15 PM</b>
<b>Monday</b>	<b>4<sup>th</sup> June</b>	<b>SCHOOL RE-OPENS FOR SUMMER 2 TERM</b>

### Attendance

Our school target for attendance set by the Leeds City Council Attendance Strategy Team is 97%. The class averages for the week from the 19<sup>th</sup> – 23<sup>rd</sup> March 2018.

<b>ROBINS</b>	99.5%	<b>WOODPECKERS</b>	95.8%
<b>BLUEBIRDS</b>	99.6%	<b>WRENS</b>	96.3%
<b>EAGLES</b>	96.3%	<b>FALCONS</b>	99.4%
<b>SKYLARKS</b>	98.3%	<b>PUFFINS</b>	97.3%
<b>HERONS</b>	99.3%	<b>KINGFISHERS</b>	96.6%
<b>RED KITES</b>	95.3%	<b>DOVES</b>	94.1%



### Special Mention



On Thursday morning we hold a Special Mention Assembly to celebrate achievements within school. If your child has achieved something really special outside of school we would be pleased to announce this on Tranmere Times. Please e-mail Mrs Reeve on [victoriareeve@tranmerepark.leeds.sch.uk](mailto:victoriareeve@tranmerepark.leeds.sch.uk)

CLASS	ATTAINMENT	TEAM WORKER
ROBINS	Johnny Walters	Monty Walker
BLUEBIRDS	Emily Tam	Amity Whelan
EAGLES	Thomas Walters	Luke Shepherd
SKYLARKS	Evie Pan	Finnegan Roberts
HERONS	Fraser Kempton	Poppy Borwell & Joe Yeates
RED KITES	Oliver Ross	Reuben Sykes-Williams
WOODPECKERS	Grace Garnett	Isla Worsman
WRENS	Ciara Laven & Will Morley	Abi Clay
FALCONS	Daniel Moore	Abi Lister
PUFFINS	Freddie Eccles	Jackson Kelly
KINGFISHERS	Sam Casey	Milly Dawson
DOVES	Eleanor Gribbin	Lucas Brookfield & Seb Murphy
MRS MARTIN	Mrs Martin gave a special mention to Lizzy Thomson and Alex Owen for 100% attendance.	

## Extended Services

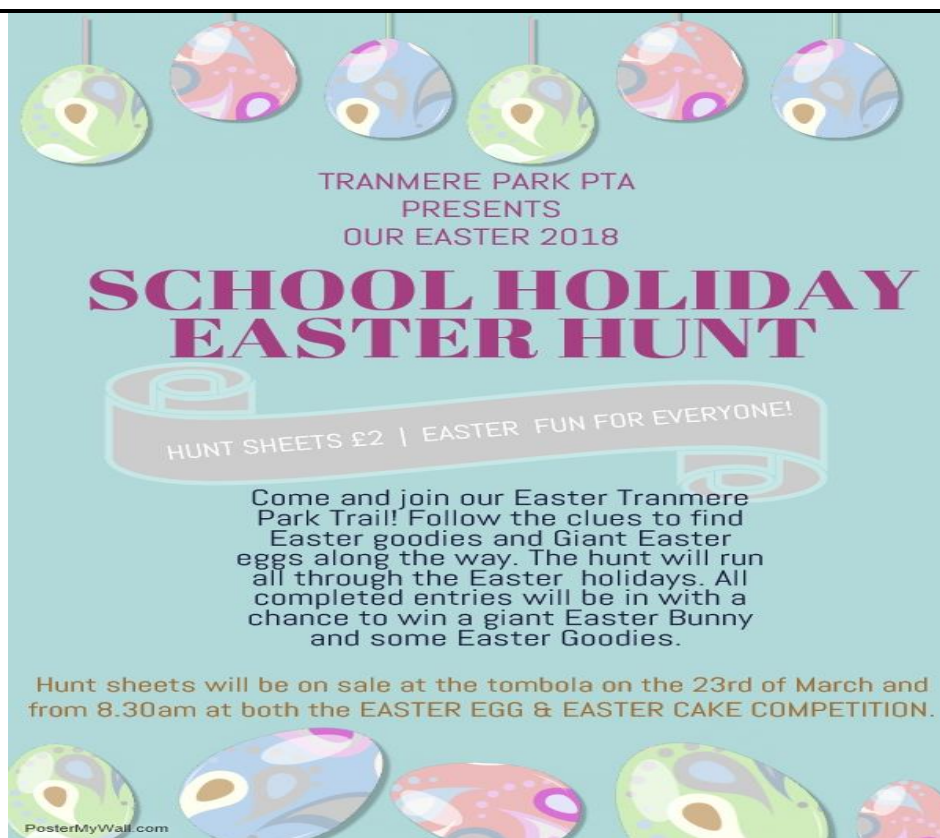
Please be advised that the clubs/events shown on our newsletter are for information only and school does not endorse and is not responsible for any content on the websites listed. Anyone looking to join a club and take part in activities **MUST** make their own appropriate background checks to ensure provision is safe and of the relevant quality to meet their needs. All clubs offering activities for infants and juniors should have in place child protection and welfare policies, which protect children and promote a safe and friendly club environment. Parents should check which child protection measures are in place when deciding which club/group they would like their child to join.



### Guiseley Cricket Club Junior Enrolment Night

Junior Registration Night will take place at Guiseley Cricket Club on **Friday 23rd March from 6.30pm** onwards. Old and new members are most welcome. Junior teams run from ages Under 9's to Under 17's and coaching sessions are held on a Friday evening for over 5's. More information will be available on the night.

## P.T.A.



We are proud to be an Active School and a Sainsbury's School Games - Gold Mark recipient. For more information go

to: [www.yourschoolgames.com](http://www.yourschoolgames.com) or [www.leedsnorthwestssp.org](http://www.leedsnorthwestssp.org)

Kirsten Finley  
Kirsten Finley  
Headteacher



NPQH Leadership  
Development School  
**National College**  
for School Leadership

